

## OPTIMISATION OF DRAW-BEAD DESIGN USING RSM AND LSDYNA

---

Prof. Krutibash Khuntia\*, Dr. Himanshu S. Moharana, Prof. Bipin B. Mohanty

\*Corresponding author: krutibash4u@gmail.com

**Abstract:** Draw-bead pioneering the sheet forming process as it solely contributes for the material flow control in order to get high preciseness in parts. Proper draw-bead (in terms of its own dimension as well as from the surrounding reference i.e. die or punch holder) installation is of great importance. This work mainly shows the draw-bead design optimization in an asymmetric type of part. The vital optimization technique has been carried out by Response Surface Methodology coupled with MINITAB software solution after importing data from LS-POST (GL/GRAPH). The basic operation of the project mainly concerning to the modeling of an asymmetric part (typically a pentagon) using DYNAFORM and which is imported to LS-DYNA solver for elemental/nodal wise analysis and consequently the whole operation simulation observed by LS-POST (GL/GRAPH). Among various input parameters like groove radius of draw-bead, its distance from die cavity, length, depth and the applied and restraining forces, only draw-bead length and depth have been interactively verified and the suitable combination of duo opted in order to find the optimum value of shell thickness and mean strain, keeping other parameters constant. Ultimately the global shell thickness has come up to an optimum value.

**Keywords:** Draw-bead, LS-DYNA, MINITAB, Mean strain, Sheet Forming Process, Shell thickness

### 1. Introduction

Sheet metal forming or drawing in accordance with Makinouchi<sup>1</sup> refers the forming of parts where plastic flow occurs over a curved axis. This so called operation due to its starting stock is in the sheet form. Material below the punch remains largely unaffected and becomes the bottom of the cup as per Nine<sup>7</sup>. The cup wall is formed by pulling the remainder of the blank inward and over the radius of the die. As the material is pulled inward the circumference decreases. Since material volume remains constant, the decrease in circumference dimension must be compensated by buckling or wrinkling. One means of suppressing the wrinkles is to compress the sheet between the die and a blank holder surface during forming, hopefully forcing an increase in either radial length or thickness. The variables mainly considered in consent with Levy are, a) the blank diameter b) the punch diameter c) the die radius d) clearance between the punch and die e) the thickness of the blank g) lubrication h) the hold down pressure. Draw-bead is a rib like projection and mating grooves in the die and blank holder. The added force of bending and unbending provided by the draw bead restricts the flow of material and the degree of constraint can be varied by adjusting the height, shape and size of the bead and bead cavity.

### 2. MODELING OF IRREGULAR CUP

Height of the component is 30mm. Initially the component is modeled with DYNAFORM and analyzed with LS-Dyna without the presence of draw-bead. Finally draw-bead is introduced at appropriate places and again simulated.

#### 2.1 Tool Input Information

Unit system: mm, Sec, Ton, N

**Blank:** Material R37 (anisotropic, elasto- plastic Material)

Thickness: 2mm

**Punch:** Material rigid shell

Static friction coefficient: 0.14

Dynamic friction coefficient: 0.0

Travel speed: 3m/sec

Total travel distance: 34mm

Tooling clearance: 1.15t mm

**Binder:** Material rigid shell

Static friction coefficient: 0.14

Dynamic friction coefficient: 0.0

Force: 200kN

**Die:** Material rigid shell

Static friction coefficient: 0.1

Dynamic friction coefficient: 0.0

**Draw bead:** Material rigid shell

Draw bead depth: 1mm, 0.5mm, 0.6mm, 0.65mm and 0.7mm

Draw bead length: 86mm, 52mm

Entrance radius : 1.5mm

Groove radius: 1.5mm

The material considered for this is cold rolled steel and its properties are given below:

Young modulus:  $2.07 \times 10^5 \text{ N/mm}^2$

Poisson ratio: 0.28

Yield stress: 230 MPa

Blank thickness: 2 mm

Static friction coefficient : 0.14

Velocity of punch: 3000 mm/sec

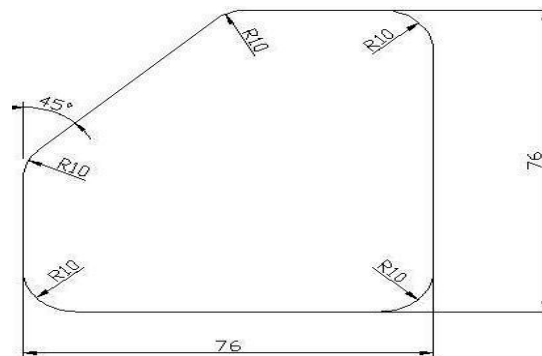
Stroke length: 34 mm

Binder Force: 200kN

Contact gap: 2 mm

Die nose radius: 10 mm

Punch nose radius: 10 mm



**Figure1: Meshing Parts**

## 2.2 Force Calculation

Punch force and Blank Holding force are playing an important role in this simulation. So, these factors have been calculated.

### 2.2.1 Punch Force

The force required for drawing depends upon the, the diameter and thickness of the cup.

Punch Force =  $t \cdot S_u (2 \times 3.14 \times R \times K_a + L \cdot K)$

$$= 130\text{kN}$$

Where,  $S_u$  = tensile strength of the material,  $t$  = thickness of the cup (mm)

$R$  = Corner Radius (mm)

$L$  = Sum of the lengths of straight sections of the sides (mm)

$K_a$  &  $K$  are Constants.

### 2.2.2 Blank Holder Force

$$\text{Blank Holder Force} = 2 \times l_{po} \times t \times TS = 127\text{kN}$$

$l_{po}$  = Length of punch opening

$t$  = Material Thickness

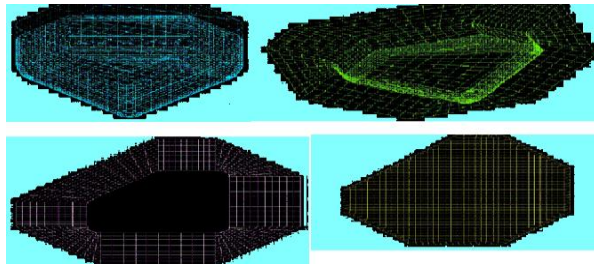
$TS$  = Tensile strength

**2.2.3 Clearance**

$$\text{Clearance} = 1.1 \times \text{Blank Thickness} = 2.2\text{mm}$$

**2.3 Meshing of Parts**

All the parts naming punch, die, blank and binder are meshed and displayed in the figure.



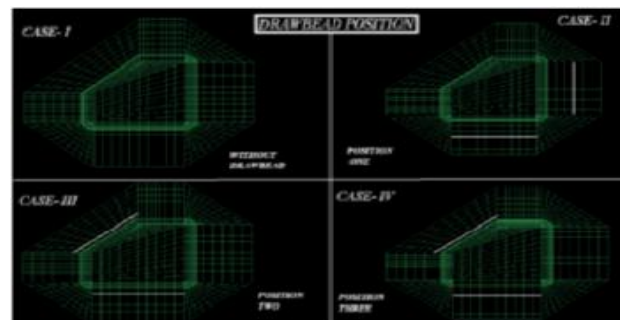
**Figure2: Meshing Parts**

**3. Methodology**

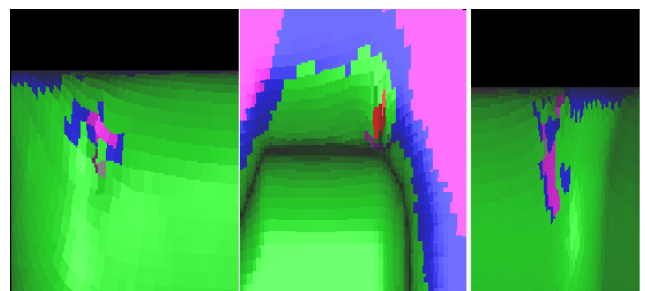
After the five sided cup modeled by using DYNAFORM, it is imported to LS-DYNA solver where it has been analyzed considering certain parameters constant and simultaneously varying certain parameters. Particularly, force value, draw-bead distance from the die center and shell thickness i.e. 200kN, 65mm and 2mm respectively are kept constants.

**Table1: Shell Thickness and Mean Strain of specimen**

0.5mm. depth+ length 52mm.		0.6mm. depth +length52mm.		0.65mm. depth+length52	
S.T. in mm.	M.S.	S.T. in mm.	M.S.	S.T. in mm.	M.S.
2.027	0.161	2.024	0.163	2.026	0.164
1.982	0.174	2.018	0.168	1.937	0.181
1.834	0.195	1.851	0.193	1.648	0.22
1.586	0.228	1.61	0.225	1.522	0.234
1.494	0.239	1.467	0.242	1.409	0.248
1.612	0.225	1.543	0.235	1.548	0.234
1.639	0.223	1.628	0.225	1.612	0.227
1.724	0.212	1.726	0.212	1.726	0.212
1.796	0.202	1.777	0.204	1.774	0.205
1.736	0.09	1.655	0.153	1.517	0.235
1.658	0.164	1.545	0.222	1.464	0.255
1.522	0.241	1.471	0.253	1.451	0.261
1.643	0.189	1.552	0.22	1.534	0.227
1.554	0.224	1.575	0.226	1.551	0.232
1.556	0.231	1.553	0.232	1.533	0.235
1.555	0.233	1.54	0.234	1.546	0.233
1.546	0.234	1.565	0.231	1.537	0.234
1.553	0.229	1.538	0.233	1.537	0.233



**Figure3: Draw-bead Positions**



**Figure4: Defects in Forming**

**4. Result and Discussion**

The excel data sheet carrying the customized design as well as optimal design values has been imported to MINITAB worksheet for undergoing RSM, which is given in table below.

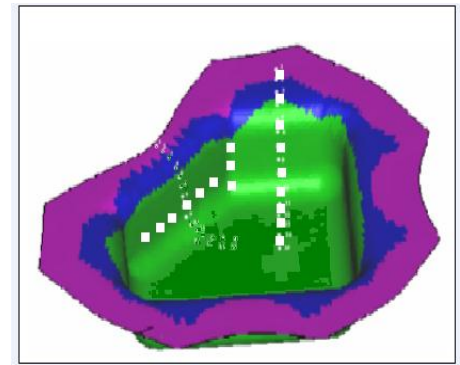
**Table2: Customized design cases**

D mm.	L in mm	S.T. in mm.	M.S.	Std. order	Run order	Bloc ks/ Poin t type	Opti mum point
0.5	93	1.748	0.204	1	1	1	1
0.5	93	1.551	0.215	2	2	1	0
0.5	93	1.608	0.223	3	3	1	0
0.6	93	1.810	0.196	4	4	1	0
0.6	93	1.558	0.219	5	5	1	0
0.6	93	1.564	0.229	6	6	1	0
0.65	93	1.768	0.204	7	7	1	1
0.65	93	1.562	0.211	8	8	1	0
0.65	93	1.563	0.230	9	9	1	0
0.5	52	1.743	0.206	10	10	1	1
0.5	52	1.638	0.165	11	11	1	0
0.5	52	1.567	0.223	12	12	1	0
0.6	52	1.738	0.207	13	13	1	0
0.6	52	1.557	0.209	14	14	1	0
0.6	52	1.553	0.229	15	15	1	0
0.65	52	1.689	0.213	16	16	1	1
0.65	52	1.477	0.250	17	17	1	0
0.65	52	1.539	0.232	18	18	1	0

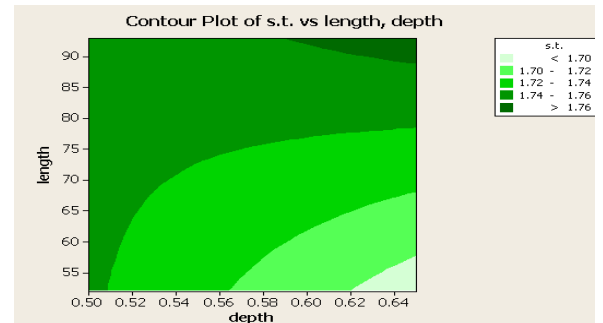
S.T.- Shell Thickness, M.S.- Mean Strain, D-Depth, L- Length

**Table3: Optimal design cases**

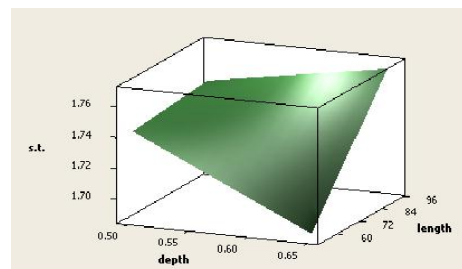
Depth in mm.	L in mm.	S.T. mm.	M.S.	Std. order	Run order	Blocks/Poin t type
0.65	93	1.768	0.204	7	7	1
0.65	52	1.689	0.213	16	16	1
0.5	52	1.743	0.206	10	10	1
0.5	93	1.748	0.204	1	1	1



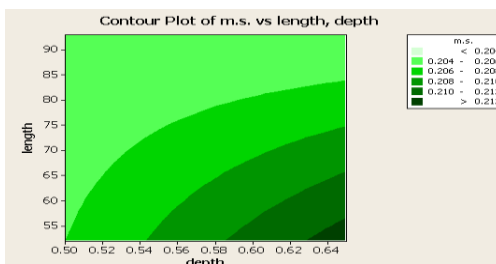
**Figure5: Elemental Positions**



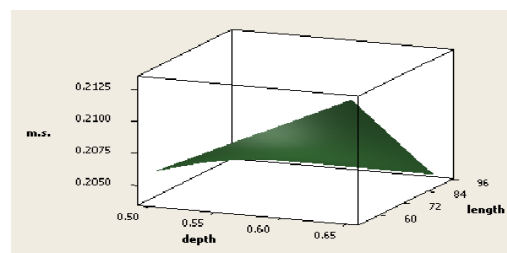
**Figure6: Contour Plot of Shell Thickness**



**Figure7: Surface Plot of Shell Thickness**



**Figure8: Contour plot of Mean strain**



**Figure9: Surface plot of Mean strain**

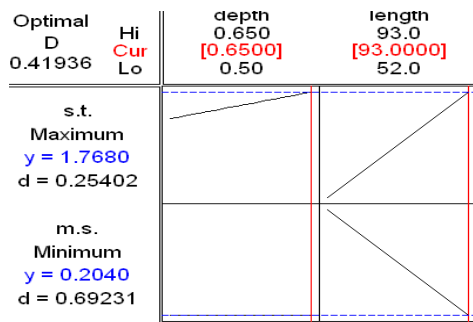


Figure10: Response Optimizer Plot

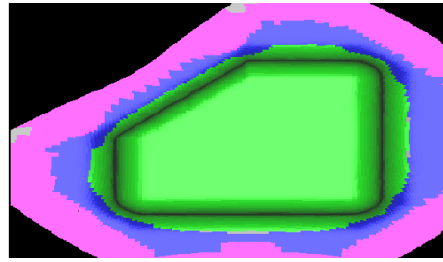


Figure11: FLD of Global Optimum

The above figure shows the response optimizer plot for the maximum shell thickness and minimum mean strain. As we can infer from the graph that depth parameter remain silent in the range of 0.50mm to 0.65mm for achieving optimal mean strain value i.e. 0.204. The following figure shows the preciseness of coming out responses which is free from any sort of defects.

## 8. Conclusion

Ultimately, abiding with LSDYNA and Response Surface Methodology the responses i.e. shell thickness and mean strain have come up to a fine précised value of 1.768mm and 0.204mm correspondingly taking average length value of 93mm and depth 0.65mm. In the beginning, RSM fed up with customized draw-bead values i.e. 0.5mm, 0.6mm, 0.65mm depth along with 52mm and 93mm average length values and consequently it arrived at the optimized values of responses considering the above independent variables.

## References

1. Makinouchi A., "Sheet metal forming simulation in industry", *J.Mater. Technol.* 60 (2013) 19–26.
2. Box, G.E.P., Draper, N.R., "Evolutionary Operation: A Statistical Method for Process Management", John Wiley & Sons, 2012 Edition, New York.
3. CorreiaDaviSampaio, CristieneVasconcelosGonçalves, SebastiãoSimões da Cunha, Jr., Valtair Antonio Ferraresi, "Comparison between genetic algorithms and response surface methodology in GMAW welding optimization", *Opt.* 15 (1998), 16–23.
4. Montgomery D., "Design of Experiments", John Wiley, New York, 2001. pp. 427-500.
5. BounelG., S. Kipersky, "Modeling and simulation of drawing process using LS-DYNA package", *J. Mater. Process. Technol.* 130–131 (1992) 54–59.
6. BaeG.H., J.H. Song, H. Huh, S.H. Kim, S.H. Park, 2007, "Simulation-based prediction model of the draw-bead restraining force and its application to sheet metal forming process", *J. Roy. Stat. Soc. Ser. B* 13 (1997), 23–58.
7. Nine H.D., "Draw-bead forces in sheet metal forming", Plenum Press, 1978, pp. 179–211.
8. Levy B.S., "Development of a predictive model for draw-bead parameters", utilizing work of Nine and Wang. *Journal of Applied Metal Working.* 19(2003), pp. 21-31.
9. Krajnik P., J. Kopac, A. Sluga, "Design of grinding factors based on response Methodology", *K. Reakax. Stat. Soc. Ser. M* 19 (2006), 1–45.
10. Jansson T., L. Nilsson. "Optimizing sheet metal forming processes-Using a design hierarchy and response surface methodology", *Opt.* 29 (2011), 11-21.



**Dr. Himanshu Sekhar Moharana** is a Professor of Mechanical Engineering and Dean Research in DRIEMS, Cuttack, Odisha. He is an alumnus of NITTTR, Chandigarh under TIET (Now Thapar University, Patiala) and obtained Master of Engineering (Honors) in Manufacturing Technology. He is a Ph.D. in Mechanical Engineering from Utkal University. He is an MBA in Operations Management and an LLM in Labour Laws. He has a no. of publications in National and International Journals and Conferences. He has also served as a Committee Member in Mechanical Engineering Division of the Institution of Engineers (India), Orissa State Centre (2010 – 2012) and worked under SIRO activities prior to this assignment. He has received nine State Awards and a National Award for his commendable contributions in the field of Engineering and Technology. He is an FIE(I), a Member of the Institution of Industrial Engineering and a Life Member of ISTE.



**Krutibash Khuntia** is an Asst. Professor of Mechanical Engineering, in Gandhi Institute of Excellent Technocrats, Bhubaneswar, completed his B. Tech in from BPUT in 2007, M. Tech in Computer Integrated Manufacturing from SRM University in 2010. He is continuing in the same field with 11 years of teaching experience. He is a life time member of ISTE. He has been awarded from the Institution of Engineers (India) for his significant work in research.



**Bipin Bihari Mohanty** is a Professor, Department of Civil Engineering, DRIEMS, Cuttack. He did his ME from VSSUT Burla in the year of 1999. He has more than 25 years of teaching & industrial experience. He has published many papers in journals & conferences on Civil Engineering.